



Learn the fundamentals of care management to **better serve your patients**

Learn the fundamentals of care management to better serve your patients. The Care Management Education program awards nearly **70 nursing contact hours** along with a Certificate of Completion.

The Care Management Education program is designed for nurses or other health professionals working in a care manager capacity, or aspiring to enter this growing field. Learn about the care management role over a series of **10 online modules** designed by University of Rochester faculty.



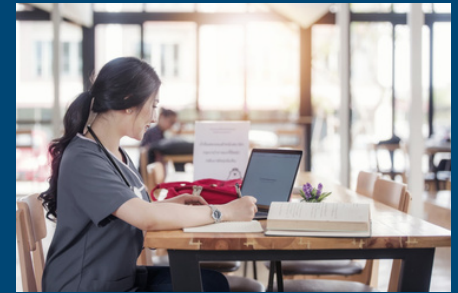
Take the program to receive a **Certificate of Completion**, or complete the individual modules to fit your needs



Start when you want and work through the material at your own pace



Nearly 70 nursing contact hours available for the complete program



Why Take This Program?

The program's evidence-based approach provides care managers – and potential care managers – with a greater understanding of the role and proven strategies for applying the critical functions of care management to real-world clinical practice. The program specifically focuses on the tenets of care management: Improving patient experiences of care, health management of a population, reducing health care costs and inefficiencies, caring for the well-being of care team members, and health equity.

Contact Hours & Accreditation

The University of Rochester Center for Nursing Professional Development is accredited with distinction as a provider of continuing nursing education by the American Nurses Credentialing Center's Commission on Accreditation.



Learn more at urson.us/care





It's a very dynamic, independent, and creative role."



Trish Ed, MS, RN

Clinical Care Manager, Olsan Medical Group

How Does the Care Manager Education Program Work?

- ▶ Register for the course or module online. Once you register, you have up to a year to complete the program.
- ▶ Activate your account in our online software and begin the course
- ▶ Complete each module, which contains video and audio presentations and interviews, interactive activities, and readings.
- ▶ Once you feel you have mastered the material, you will take a quiz at the end of the module.
- ▶ After passing the quiz, you will complete an evaluation and will be emailed a confirmation of completion, which indicates hours* earned.
- ▶ If you have purchased the whole program, you will receive a Certificate of Completion in Care Management after completing all modules, evaluations, and a final exam

CURRICULUM & MODULES

The program consists of **10 modules**, each covering an essential aspect of the care manager role. To complete the program, take one module at a time, or all 10. Those who complete all 10 modules will receive a Certificate of Completion in Care Management.

The series of modules provides nearly **70 continuing education credits (CNE)**, which may also be applied to maintaining care manager national certification.

Please note: this course is built on the principles and skills tested on the Certified Case Manager (CCM) exam, however, this is not a direct exam preparation course with practice questions.

Full access to the Online Care Management Education program (10-modules)

- ▶ \$495 for general public
- ▶ \$435 for UR Medicine employees, UR Medicine affiliate employees, and Finger Lakes region residents

Cost for individual modules:

- ▶ \$75 for the general public
- ▶ \$65 for UR Medicine employees, UR Medicine affiliate employees, and Finger Lakes region residents

Registration

Register for the Care Management Education program to gain access to course content on via the University of Rochester's learning management tool, Blackboard. Complete the program at your own pace.

to learn about our group rate, employers should contact **the Center for Lifelong Learning directly at (585) 275-0446.**

Connect with us



(585) 275-0446



urson.us/care



soncll@urmc.rochester.edu